

DAFA Radon sump

DAFA Radon sump is a part of DAFA Radon System. It serves as a collection point for radon gas prior to it being ventilated away.

Application

Where subfloor depressurizing is required, use of DAFA Radon sump is advised. Ventilating the radon gas away is assessed to be the most effective method to prevent it from penetrating the building.

Material

DAFA Radon sump is a prefabricated 33 kg/m³ polyethylene foam unit.

Installation

- Install the sump making sure that the top of the sump is aligned with the top level of the capillary breaking layer
- Connect all the horizontal pipes to the sump making sure that all joints and couplings are airtight.

Transport, delivery and storage

DAFA Radon sump must be stored in the box until use. The delivery contains 1 sump per box.

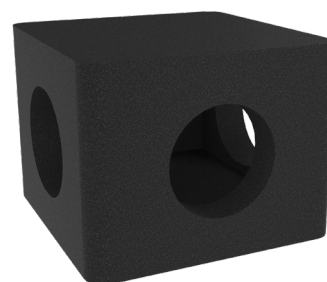
Dimensions

280 mm x 280 mm x 200mm.

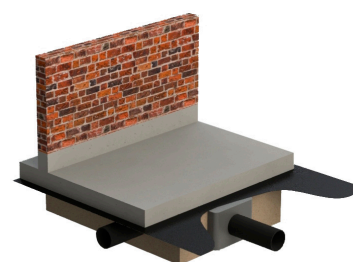
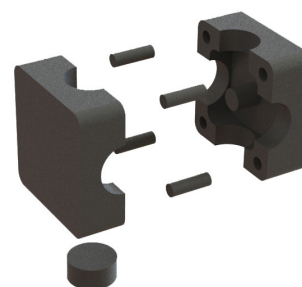
Suitable for pipes Ø110 mm.

Advantages

- Easy mounting
- Light weight (approx. 325 g)
- Own production
- Flexible



DAFA Radon sump



DAFA Radon sump in a capillary breaking layer.

Technical specifications

Contents	1 sump per box
Material	PE foam
Density	33 kg/m ³
Dimensions	280 x 280 x 200 mm
Weight pr. unit	Approx. 325 g
DAFA item no.	620029529
EAN no.	5705636441207

