

DAFA EPDM products

With optimum flexibility

Application

EPDM products are used for sealing tasks and to accommodate movement where flexibility and elasticity are needed. They come into their own as rubber skirtings around plinths, flashing, spacers and journal bearings. DAFA manufactures EPDM products to specification, so the product is always project-specific.

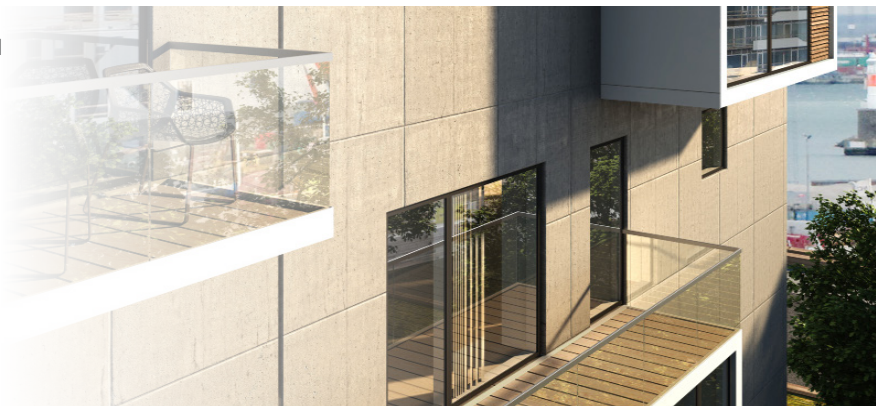
Product benefits

EPDM is an elastic type of rubber. It is weather and ozone-resistant and can withstand temperatures down to -45°C and up to +130°C. It is therefore extremely suitable for use outdoors.

- UV resistant
- Good sealing characteristics
- High elasticity

See more at www.dafa-as.com

*EPDM solutions
tailored to the
specific task*



DAFA produces EPDM products to specification so the product matches the exact requirements of the specific task.



Rubber skirtings on plinths give an excellent seal and will not slip, even if the building elements move.



EPDM strips protect the wood behind them against the effects of weather and accommodate potential movement.

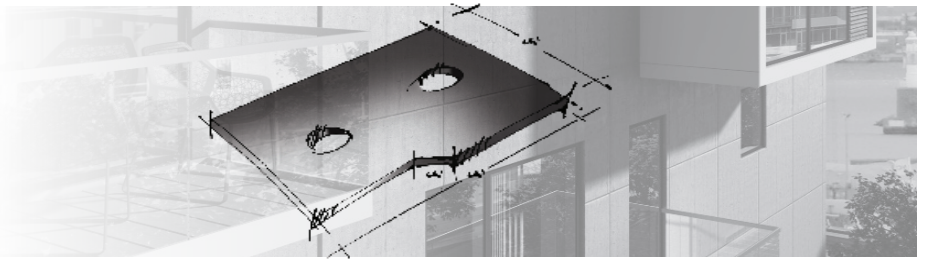


EPDM for flashing is UV resistant and is sealed around openings with EPDM adhesive.

EPDM special- and standard products

EPDM in special dimensions and designs

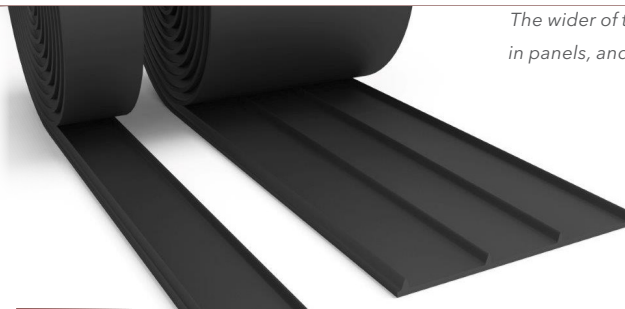
DAFA manufactures EPDM products to specification in terms of both dimension and design, and can also incorporate blanks and holes as required. This means the product will be an exact match for the



EPDM strips

EPDM strips are used for facade panels, where they act as a seal and allow for minor tolerances in the structure. The strips are available in two widths of 20 mm and 74 mm respectively.

- Seals the building envelope
- Accommodates small degrees of movement
- Weatherproof



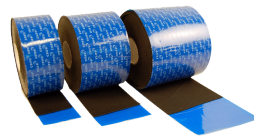
The wider of the EPDM strips is used for joins in panels, and the narrower version is used to support them from below.

Type	Contents per roll	DAFA item-no	EAN-no
EPDM-list 74 mm	30 m	311800074	5705636096339
EPDM-list 20 mm	30 m	311864452	5705636096346

EPDM rubber sheeting

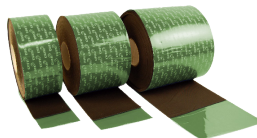
EPDM rubber sheeting is used particularly for flashing on facade work and plinths. EPDM rubber sheeting is available in thicknesses of 1.2 mm (blue rolls) and 0.8 mm (green rolls). Both thicknesses are offered in widths of 100, 145 and 205 mm.

- Seals the building envelope
- High elasticity
- Easy to cut



Blue rolls, thickness : 1.2, length: 30 metres

Width	DAFA-no	EAN no
100 mm	620013771	5705636339542
145 mm	620013844	5705636340098
205 mm	620013845	5705636340104



Green rolls, thickness: 0,8 mm, length: 30 metres

Width	DAFA-no	EAN-no
100 mm	620002672	5705636264264
145 mm	620011802	5705636325590
205 mm	620013770	5705636339535

DAFA EPDM adhesive

DAFA EPDM adhesive is used for bonding EPDM membranes to building elements in most structures. It adheres to aluminium, metal, zinc-coated metal, wood, concrete and other non-porous materials. DAFA EPDM adhesive has excellent resistance to ageing and changes in temperature, and is waterproof.



The adhesive is not suitable for direct application to polystyrene, PVC, asphalt or tar.

Content per box	DAFA-no	EAN-no
600 ml	620026751	5705636423418

